


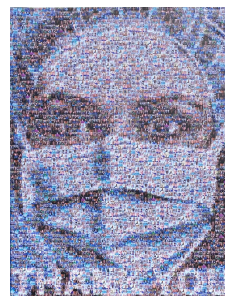
Coronavirus
Swansea Council's Response
#HereforSwansea



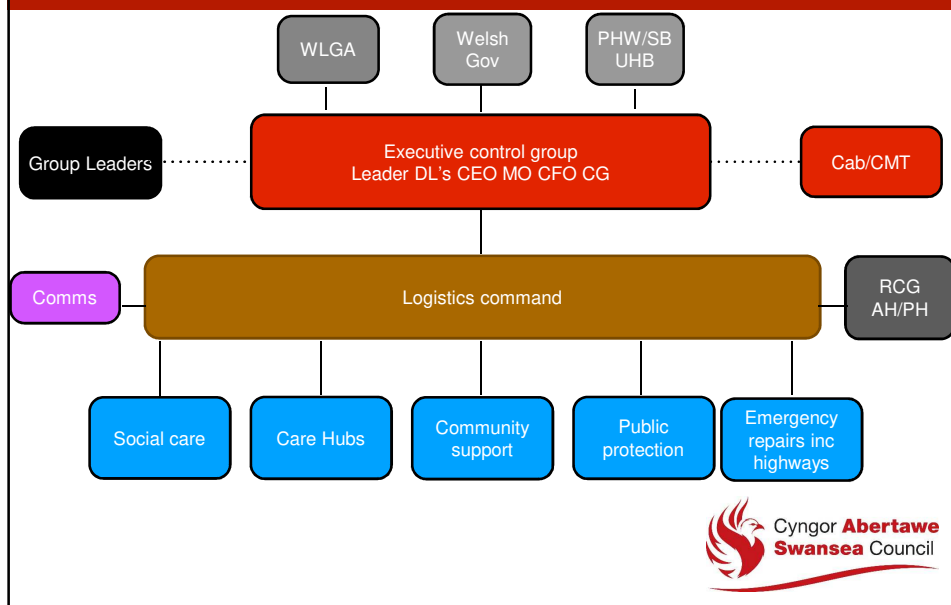
Cyngor **Abertawe**
Swansea Council

Content

- Decision making structure during the Crisis
- Rapid redesign of council services
- Supporting our NHS
- Expanding Social Care
- Supporting key workers
- Supporting Vulnerable People
- Helping the homeless
- Test Trace Protect
- Meeting the cost of Covid



Decision making during the crisis



Rapid Redesign of council services

- 4500 Council staff moved to work from home using digital technology
- 221 redeployed and over 300 repurposed Council staff into essential / support services
- Non essential services hibernated
- Emergency child care hubs created in 60 school locations
- Free school meals services established
- Social care packages of care reviewed to limit unnecessary contact
- Over 140 extra social care workers available
- 2 additional emergency care centres opened
- PPE supply chains bolstered and new suppliers identified
- PPE supply arrangements established to support all Swansea bay social care locations
- Risk assessments undertaken on essential roles
- 1000 bed surge hospital designed, approved and constructed @ bay studios
- Emergency homeless support established
- Food supply and distribution networks established
- Over 1400 local volunteers recruited
- Shielding support services established including dedicated helpline, food and medicine delivery, local area workers
- Business support grants totaling £47m paid to over 3700 local businesses
- £35m in rate relief to local businesses
- Total so far over £82m to help businesses get through the crisis
- Recovery plans being created

#HereForSwansea

Supporting our NHS - Surge Hospital

- 1000 bed surge hospital created at Swansea Bay studios
- Hospital build Lead and managed by Swansea Council Building Services
- KIER and TRJ were main contractors
- Up to 400 trades on site 24x7 in first 30 days
- First 500 bed phase completed within 35 days
- Full completion in less than 90 days
- Estimated cost £12m-£15m
- Funded by Council Capital equalisation reserve
- SBUHB full repayment due end June 2020
- Thanks recorded for Roy Thomas for agreement to use the site
- Surge hospital has not been required for COVID 19 treatment to date but will be used for Antibody testing
- Longer term use being considered



Expanding Social Care

- 140 extra Social care workers available
- Over 1500 hours made available for community care
- Two additional care locations created in Sketty and Gorseinon
- 140 additional bed spaces made available
- Packages of care reviewed to limit unnecessary external contact
- PPE supply arrangements bolstered with Swansea procuring PPE for Swansea Bay Healthboard Area - Swansea and NPT
- PPE supplies available to independent sector care homes
- Support offered to independent care homes



Supporting Key Workers

- Emergency care hubs established in 60 school locations
- FSM grab and go bag service established
- Food box delivery service established
- BACS payments services established - £39.00 per 2 weeks
- Thanks to heads, teachers, teaching staff and all other staff who helped design and operate this system within 3 days of the lockdown announcement



Supporting Vulnerable People

- Food supply and distribution network established
- Council stepped in to support and expand food bank network
- 8,500 residents identified as part of the Shielding programme
- 2800 residents provided with food box deliveries to shielding and vulnerable people (currently 500 per week)
- Local area coordinator network expanded using redeployed staff to cover all areas of Swansea
- Medicine collection and delivery service established
- Volunteer shopping service established
- Dedicated helpline created - linked to a remote working contact centre



Helping the Homeless

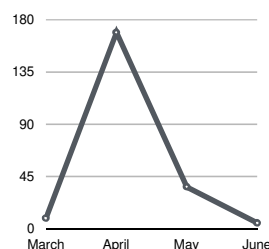
- 'Always a bed' homeless programme in place before the pandemic
- Additional Emergency provision secured for the homeless at start of lockdown
- 70-75 in emergency B&B accommodation
- Between 3-6 people per week have refused emergency help
- Ty Tom Jones reopened to provide additional capacity for homeless provision - 9 households now moved in
- 3 special isolation properties available
- Support for the U.K. Asylum Seeker programme provided - temporary help for over 100 families/individuals
- 20 households identified for Housing First programme



Current Covid position - Swansea

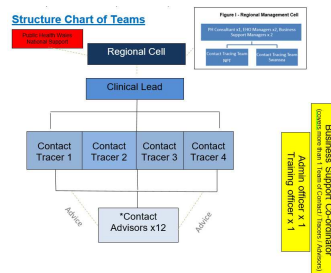
1. Currently Swansea has the lowest rate of positive cases for any large population centre at **518.5** per 100,000 population.
2. **1,278** cases have been confirmed positive across all settings
3. **219** people have confirmed to have died from Covid 19
4. **15.3%** of tests have been found positive, again lower than other population centres.
5. **8,353** tests have been delivered and this continues to increase with the CTU formed at Liberty Stadium in conjunction with SBUHB, providing the largest capacity in Wales (up to 340 physical tests per day) and additional capacity for drive through for home test drop off
6. Bay Field Hospital will commence Antibody testing of Education staff week commencing 15/06/20
7. Mobile Testing Units for Care Homes established and working effectively.

**All correct as of 12th June*



Test Trace Protect - Status

- Test, Trace, Protect strategy is to enhance health surveillance in the community, undertake effective and extensive contact tracing, and support people to self-isolate where required to do so
- A three-tiered approach - national, regional and local
- Based on Swansea Bay Health Board Region
- Responsible for supporting Regional approach and manage local approach
- The aim is to reduce the number of secondary cases
- Virtual Contact centre
- 8 Teams – 139 Staff
- 18th - 29th May 1 Team
- 1st – 7th June 2 Teams
- 8th June (go live) 4 Teams
- 1st July 8 Teams
- Digital first approach through email, text and online
- Non-contact or Complex cases followed up by contract tracing team



Meeting the cost of COVID19

- Budgets significantly flexed - £100m+ revenue / £15m+ capital
- Temporary use of earmarked reserves including contingency – flexing financial muscle
- Claims made monthly to WG for reimbursement
- Cash flow impact – increased spend, lost service & tax income, grant pots from WG mostly in arrears
- Tightly managing cash flow and resource cover daily
- Impact and forecast reported formally at 1st quarter
- Too early to tell longer term effects versus temporary
- Supplementary budget statement made with little negative change for Local Government budgets
- WLGA coordinating claims for lost income replacement funding to WG 'star chamber' - £78m
- Looking at longer term Impacts rest of 21/22 & MTFP
- Business support grants totaling £47m paid to over 3700 local businesses
- £35m in rate relief to local businesses
- Total so far over £82m to help businesses get through the crisis

